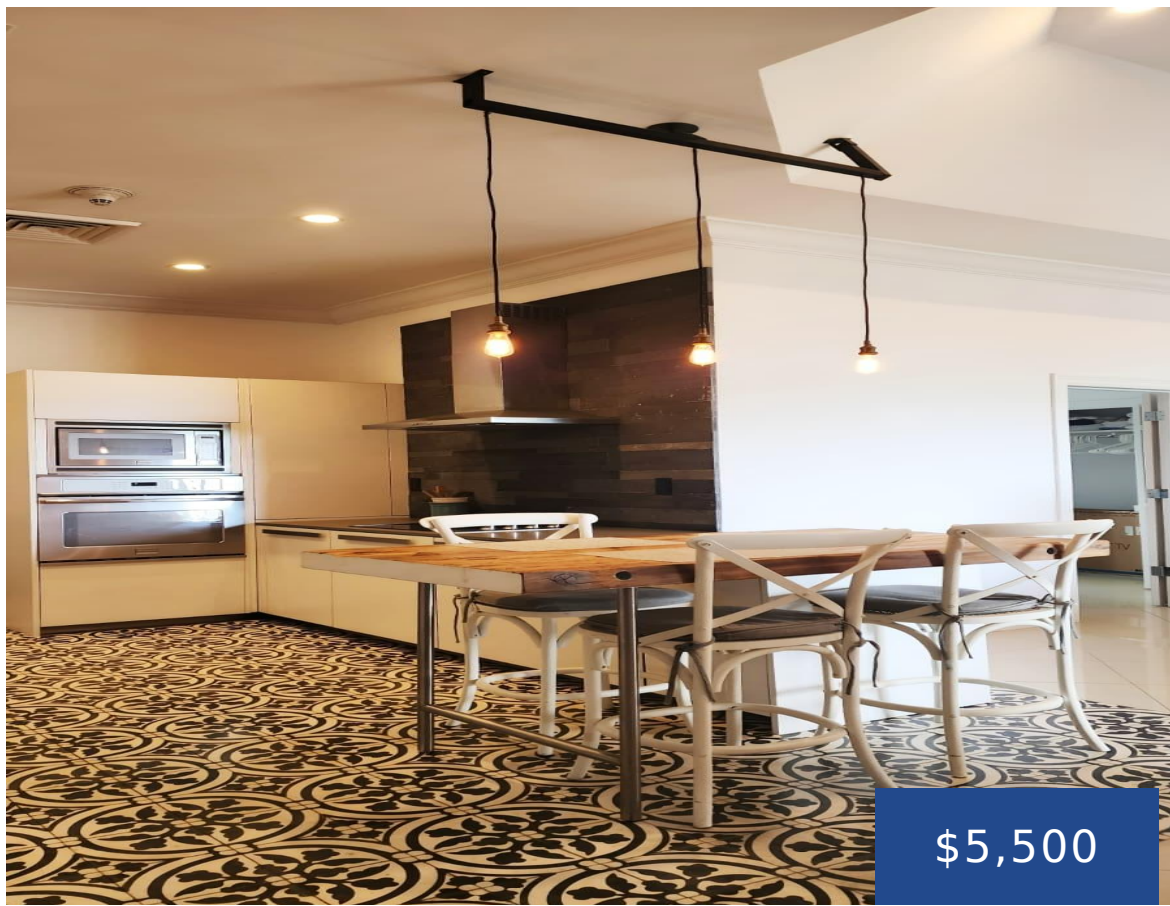


WEST BAY STREET NEW PROVIDENCE/PARADISE ISLAND

<https://wateredgebahamas.com>



This tastefully furnished, move in ready 2nd floor condo offers spectacular living in the exclusive gated community of 'Caves Heights'. This Beautiful 2-bedroom, 2.5-bathroom unit has a spacious 1,855 sq.ft of open plan living space with a large balcony offering magnificent ocean and sunset views. The community amenities include a free form swimming pool, a [...]

- 2 beds
- 2 baths
- Condo
- Condo
- For Rent Only
- 1855 sq ft



Basics



Call us now

Phone: 242.424.4448
Email: info@wateredgebahamas.com
Address: Nassau, Bahamas



**WaterEdge
Realty**

Rental Amount: 5500

Subdivision: Caves Heights

Half Bathrooms: 1

Construction: Steel/Concrete

Total Finished Floor Area: 1885

Status: For Rent Only

Bathrooms: 2 baths

Lot size: 0 sq ft

Location: West Bay Street

Island: New Providence/Paradise Island

Lot Number: 00

Category: Condo

Type: Condo

Bedrooms: 2 beds

Area: 1855 sq ft

Property Features

Amenities: Swimming Pool,Furnished

Exterior Finish: Finished Concrete

Water: City

Foundation: Yes

Assessment Includes (Condo):

Management,Maintenance,Landscaping,Garbage Disposal

Style: Apartment

Sewer: Connected

Roof: Tile

Air conditioning (Condo):
Central

Parking Type:

Other,Additional
Parking,Visitor Parking

Rooms&Units Description

Unit Number: 3A

Miscellaneous

Legal Description: Unit 3A, Building 1, Caves Heights Condominiums, West Bay Street, Nassau, The Bahamas



Call us now

Phone: 242.424.4448

Email: info@wateredgebahamas.com

Address: Nassau, Bahamas



**WaterEdge
Realty**