

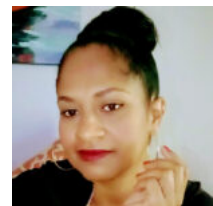
PRIME OCEANFRONT ACREAGE, WEST BAY STREET

<https://wateredgebahamas.com>



Prime hilltop OCEANFRONT acreage on West Bay Street with unobstructed views and beach access to one of the most beautiful beaches on the island. This 8.070 acre property is an investor's dream with endless possibilities. First class location for any high-end development – condos/villas/office building/luxury shopping village, just to name a few Featuring 318'N on [...]

- Lots/Acreage, Luxury Development
- Lots/Acreage
- For Sale, For Sale Only



Valderine Edgecombe

Basics



Call us now

Phone: 242.424.4448
Email: info@wateredgebahamas.com
Address: Nassau, Bahamas



**WaterEdge
Realty**

Listing Number: VA230501

District: Western

Lot Width: 318' x 203.31'

Category: Lots/Acreage

Type: Lots/Acreage, Luxury Development

Lot size: 351529 sq ft

Location: West Bay Street

Island: New Providence/Paradise Island

Lot Depth: 1,1124.95' x 1,102.51'

Commercial: Commercial

Status: For Sale, For Sale Only

Miscellaneous

Virtual Tour Link:

Warning: Array to string conversion in `/home/u528175744/domains/wateredgebahamas.com/public_html/wp-content/plugins/estatik4-premium/templates/front/property-pdf/partials/section.php` on line 66
Array

Listing

Private Notes: Mr. Saunders - Majestic Tours 322-2606 (work)
Directions: Traveling west on WBS it's the parcel just before the corner parcel at Caves Height on the left.

Amenities & Features

Features: Hilltop, Oceanview



Call us now

Phone: 242.424.4448

Email: info@wateredgebahamas.com

Address: Nassau, Bahamas



**WaterEdge
Realty**