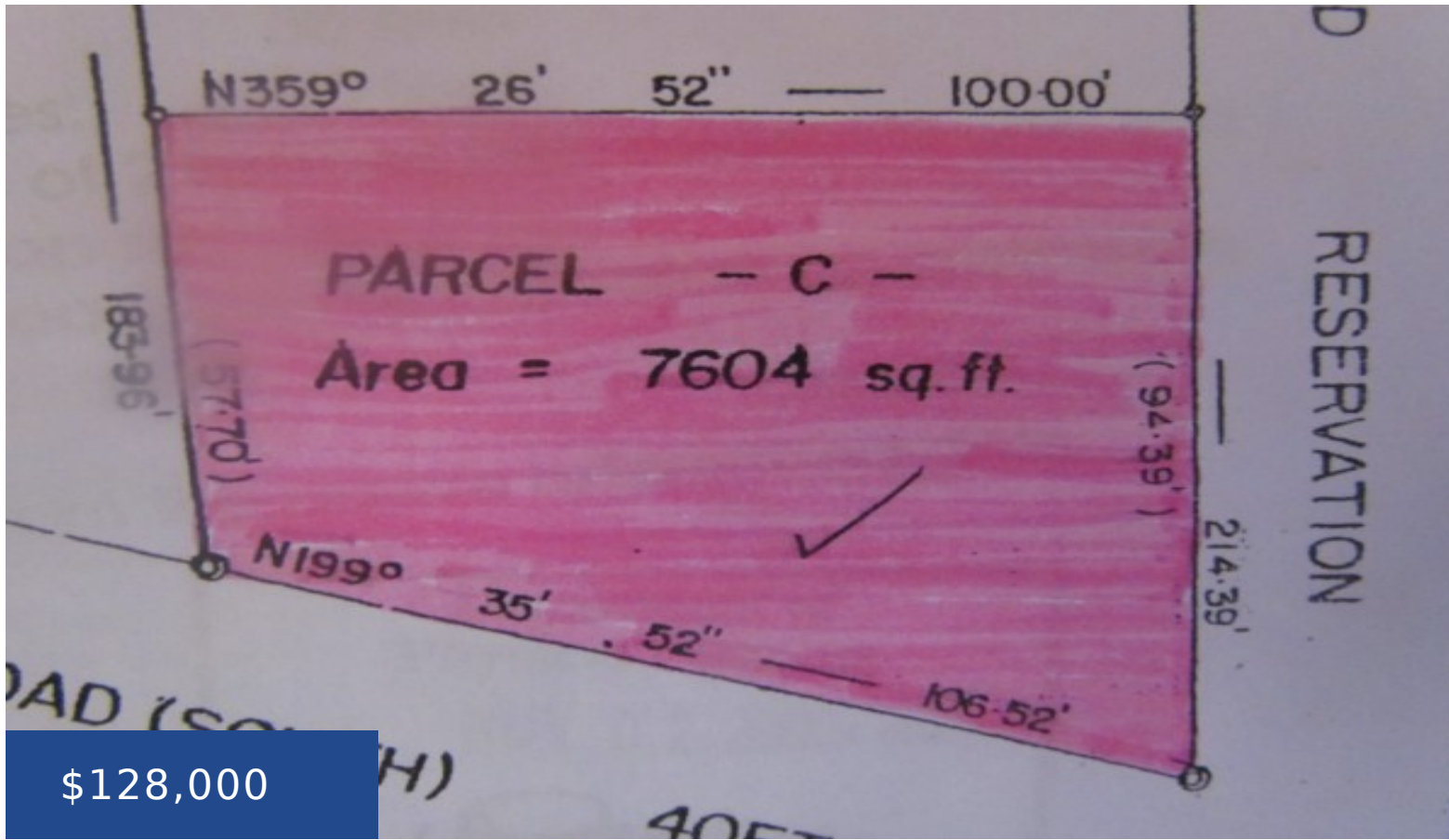


MULTI-FAMILY CORNER LOT FOX HILL ROAD

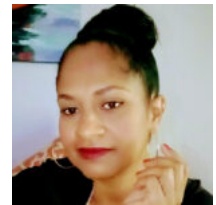
<https://wateredgebahamas.com>



\$128,000

This multi-family lot located on Fox Hill Road offers alot of potential. Situated in an open zoned area, this corner lot is ideal for a commercial building site or any other desirable investment/residential opportunity. Just moments away from public transportation, banking, schools and much more. Price inclcudes building plans for a two storey semi-commercial complex. Must see to appreciate!

- Lots/Acreage, Luxury Development
- Lots/Acreage
- For Sale, For Sale Only



Valderine Edgecombe

Basics



Call us now

Phone: 242.424.4448
 Email: info@wateredgebahamas.com
 Address: Nassau, Bahamas



Listing Number: VM121101

Island: New Providence/Paradise Island

Property Dimensions: 57.70 x 100 x 94.39 x 106.52

Type: Lots/Acreage, Luxury Development

District: Eastern

Living Area: 7,604 sq ft

Category: Lots/Acreage

Status: For Sale, For Sale Only

Miscellaneous

Listing Private Notes: Gary Cox - Destiny Motors 3767302/3646572 Heading south on fox hill road, after you pass johnsons barber shop, first corner lot on the right.

Amenities & Features

Features: Alarm, Ductless Air System, Furnished, Partially Enclosed Yard, Porch



Call us now

Phone: 242.424.4448

Email: info@wateredgebahamas.com

Address: Nassau, Bahamas



**WaterEdge
Realty**