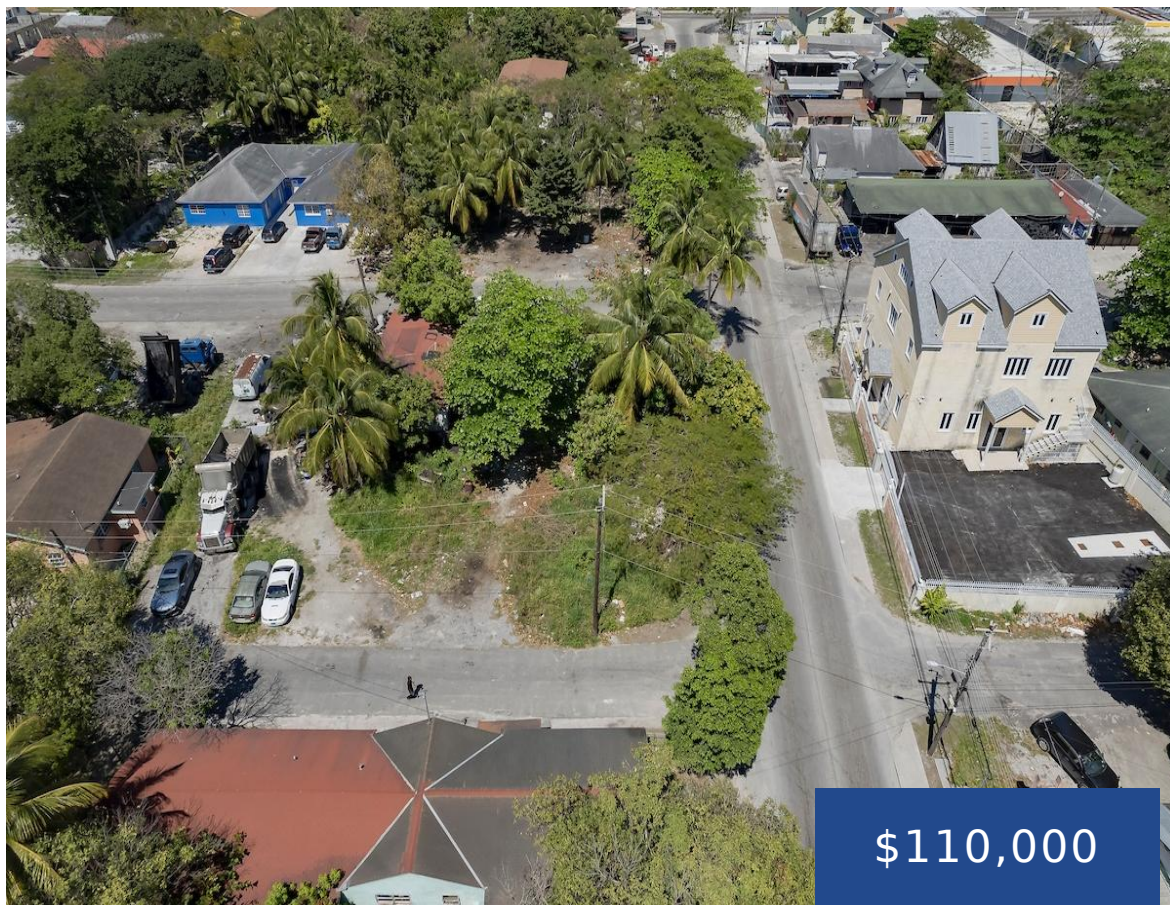


LINCOLN BLVD NEW PROVIDENCE/PARADISE ISLAND

<https://wateredgebahamas.com>



This commercial vacant land in Lincoln Blvd area is ideally located at the corner of Lincoln Blvd and Homestead Ave, offering 5,143 sq ft of commercially zoned space with excellent visibility and steady traffic flow. The corner positioning enhances access and signage potential, making it well suited for a range of commercial uses. With strong [...]

- Land Only
- Commercial
- For Sale Only



Basics

Location: Wulff Road

Category: Commercial

Status: For Sale Only

Island: New Providence/Paradise Island

Type: Land Only

Lot size: 5143 sq ft

Miscellaneous



Call us now

Phone: 242.424.4448
Email: info@wateredgebahamas.com
Address: Nassau, Bahamas



**WaterEdge
Realty**

Legal Description: Lots 5,6,7and 8 Block 27 Englerston Subdivision



Call us now

Phone: 242.424.4448

Email: info@wateredgebahamas.com

Address: Nassau, Bahamas



**WaterEdge
Realty**