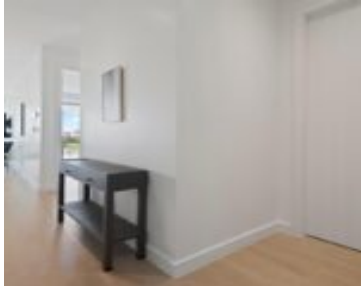


GOLDWYNN NEW PROVIDENCE/PARADISE ISLAND

<https://wateredgebahamas.com>



\$1,400,000



Enjoy luxurious island living in this 1,748 sq. ft. condo at Goldwynn Resort & Residences with stunning golf course views and abundant natural light from floor-to-ceiling windows. The modern kitchen features sleek cabinetry and quality appliances, flowing into the dining and living areas—perfect for entertaining. This home offers 2 spacious bedrooms and 2 bathrooms, including [...]

- 2 beds
- 2 baths
- Condo
- Condo
- For Sale Only
- 1748 sq ft



Basics



Call us now

Phone: 242.424.4448
Email: info@wateredgebahamas.com
Address: Nassau, Bahamas



WaterEdge Realty

Location: West Bay Street

Island: New Providence/Paradise Island

Category: Condo

Type: Condo

Bedrooms: 2 beds

Area: 1748 sq ft

Subdivision: Goldwynn

Construction: Steel/Concrete

Total Finished Floor Area: 1748

Status: For Sale Only

Bathrooms: 2 baths

Lot size: 0 sq ft

Property Features

Amenities: Swimming Pool, Impact Windows, Stand-by Generator, 24 Hour Security, Furnished

Exterior Finish: Finished Concrete

Water: City

Foundation: Yes

Assessment Includes (Condo): Management, Hot Water, Recreation Facility, Maintenance, Garbage Disposal, Insurance

Style: Apartment

Sewer: Connected

Roof: Membrane

Air conditioning (Condo): Central

Parking Type: Carport - Single, Underground Garage, Visitor Parking

Rooms&Units Description

Unit Number: 434

Miscellaneous

Legal Description: Goldwynn, Unit 434, Nassau, Bahamas

Site Influences: Central location, Golf Course Nearby, View - Ocean, Shopping Nearby, Landscaped, Waterfront - Ocean, Road - Paved, Recreational, Gated Community, Beach Front



Call us now

Phone: 242.424.4448

Email: info@wateredgebahamas.com

Address: Nassau, Bahamas



**WaterEdge
Realty**