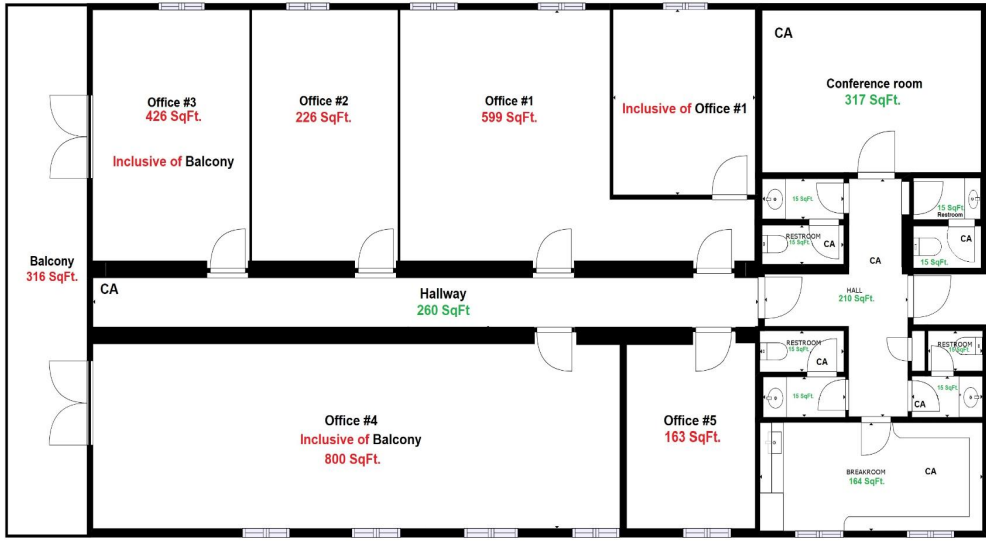


ELIZABETH ON BAY UNIT #19/20 CO-WORKING OFFICE #3 NEW PROVIDENCE/PARADISE ISLAND

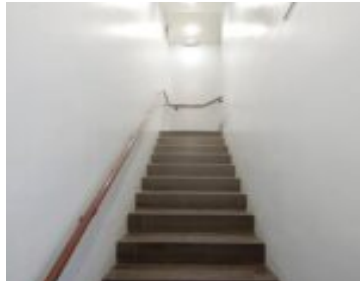
<https://wateredgebahamas.com>

Elizabeth on Bay Plaza & Marina - Unit #19/ 20 Floor Plan

CA - COMMON AREA



Gross Internal Area: 3,285 SqFt.
 Total Rentable Area: 2,214 SqFt.
 Total Common Area: 1,071 SqFt.



Matterport

\$1,207

The Elizabeth on Bay Plaza Co-Working spaces offers small through large co-working spaces that are both secluded and secured. Whether you need a small office to escape the confines of home or a large office to help propel your business into being a household name. The Elizabeth on Bay Plaza has it all. Office #3 [...]

- Business Opportunity
- Commercial
- For Rent Only



Call us now

Phone: 242.424.4448
 Email: info@wateredgebahamas.com
 Address: Nassau, Bahamas



WaterEdge Realty

Basics

Rental Amount: 1207

Location: Downtown

Business Name: Elizabeth on Bay Plaza & Marina

Commercial: Retail & Offices

Type: Business Opportunity

Title of Property: Elizabeth on Bay

Island: New Providence/Paradise Island

Category: Commercial

Unit Rentable Area: 426

Status: For Rent Only

Rooms&Units Description

Unit Number: 19/20

Miscellaneous

Legal Description: Unit 19/20 Elizabeth on Bay Plaza & Marina

Operating Cost per SqFt: 34.00



Call us now

Phone: 242.424.4448

Email: info@wateredgebahamas.com

Address: Nassau, Bahamas



**WaterEdge
Realty**